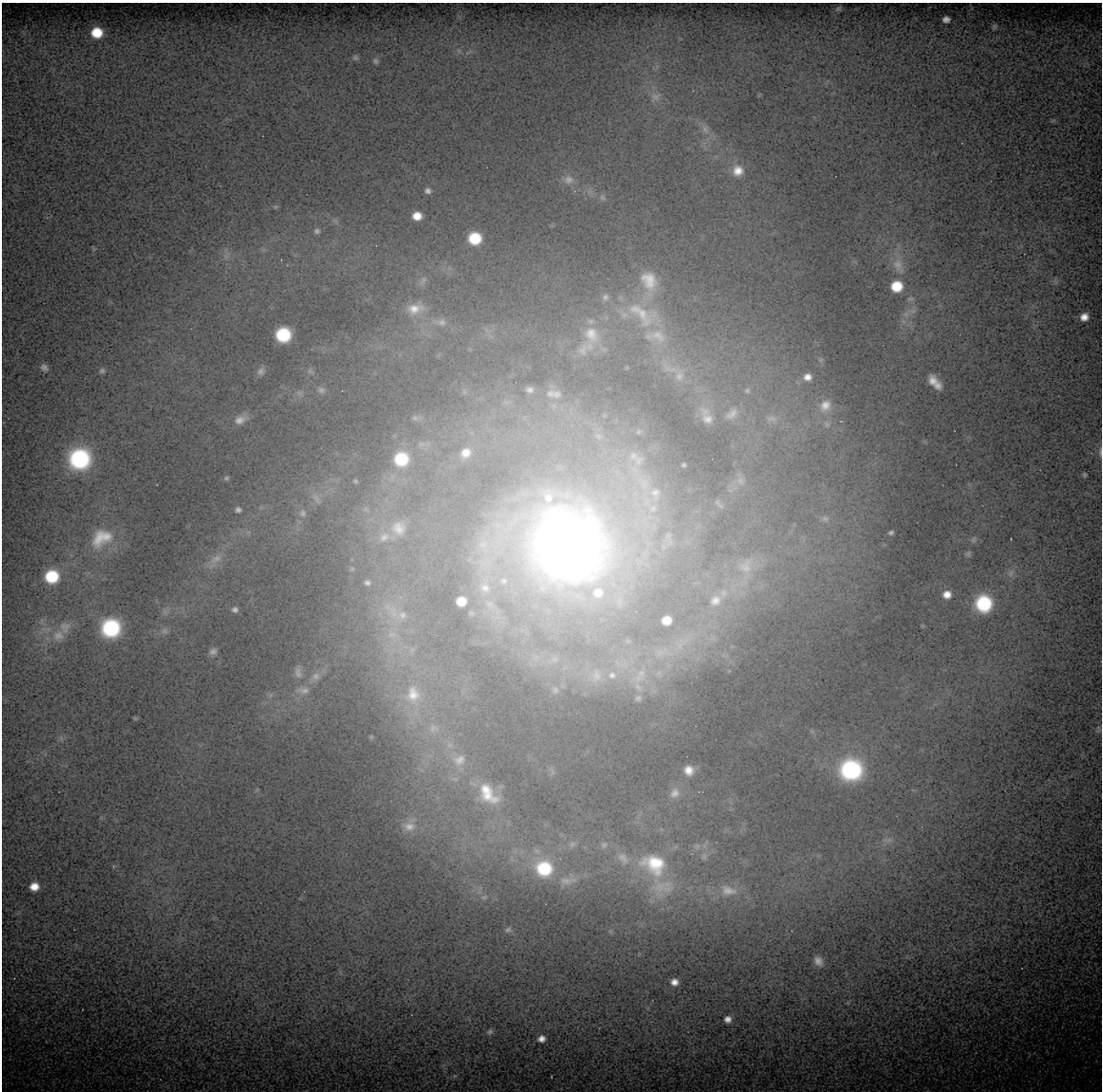


for Raymond Chobaz and The University of Florida Symphony Orchestra

Supernova

Paul Richards



for Raymond Chobaz and The University of Florida Symphony Orchestra

Supernova

Instrumentation:

Piccolo

2 Flutes

3 Oboes

3 Clarinets in A

2 Bassoons

Contrabassoon

4 Horns in F

3 Trumpets in C

2 Trombones

Bass Trombone

Tuba

Timpani

3 Percussion

1: Xylophone, Bass Drum, Tam-tam

2: Marimba, Mounted Tambourine, Snare Drum, 3 Tom-toms, Tam-tam

3: Glockenspiel, Vibraphone, Temple Blocks

Piano

Strings

Program Note:

During the brief duration of a supernova, a brilliant light from a single star outshines entire galaxies. Under very special, and rare, circumstances, a star contracts under its own gravity, forming in the process the heavier elements that make planets, and life, possible. Some artistic experiences share with this phenomenon that same rare, special, fleeting, and vitally essential quality. In honor of their spirited performances throughout the years, **Supernova** was written for conductor Raymond Chobaz and The University of Florida Symphony Orchestra in celebration of the 30th anniversary of the College of Fine Arts.

Duration: 3'30"

score is transposed

Supernova

for Raymond Chobaz and The University of Florida Symphony Orchestra

Paul Richards

Tempo: ♩ = 84 highly energetic

Score Components:

- Piccolo
- Flute 1 & 2
- Oboe 1 & 2
- Clarinet in A 1 & 2
- Bassoon 1 & 2
- Contrabassoon
- Horn in F 1 & 2
- Trumpet in C 1 & 2
- Trombone 1 & 2
- Bass Trombone
- Tuba
- Timpani
- Percussion 1 (Xylophone, hard mallets)
- Percussion 2 (Mounted Tambourine, Snare Drum (staves on) hardwood sticks)
- Percussion 3
- Piano
- Violin I
- Violin II
- Viola
- Cello
- Double Bass

Key Signature: D major (three sharps)

Time Signatures: 2/4, 3/4, 4/4, 5/8, 4/4

Dynamic Markings: *ff*, *f*, *mf*, *p*, *pp*, *ppp*, *div.*, *unis.*, *mezz.*

Performance Instructions: *hard mallets*, *staves on*, *hardwood sticks*

Supernova

Picc.

Fl. 1
2

Ob. 1
2
3

A Cl. 1
2
3

Bsn. 1
2

C. Bn.

F Hn. 1
2
3
4

C Tpt. 1
2
3

Tbn. 1
2

B. Tbn.

Tuba

Timp.

Perc. 1

Perc. 2

Perc. 3

Pno.

Vln. I

Vln. II

Vla.

Vc.

D.B.

5

The musical score for 'Supernova' page 2 includes the following instruments and parts:

- Picc.**: Piccolo flute, starting with *ff* and *f* dynamics.
- Fl. 1/2**: Flute parts, starting with *ff* and *f* dynamics.
- Ob. 1/2/3**: Oboe parts, starting with *ff* and *f* dynamics.
- A Cl. 1/2/3**: Alto Clarinet parts, starting with *ff* and *pp* dynamics.
- Bsn. 1/2**: Bassoon parts, starting with *ff* and *f* dynamics.
- C. Bn.**: Contrabassoon, starting with *ff* and *f* dynamics.
- F Hn. 1/2/3/4**: French Horn parts, starting with *ff* and *f* dynamics.
- C Tpt. 1/2/3**: Cornet parts, starting with *ff* and *f* dynamics, including *plunger mute* and *gradually open* markings.
- Tbn. 1/2**: Trombone parts, starting with *ff* and *f* dynamics.
- B. Tbn.**: Baritone Trombone, starting with *ff* and *f* dynamics.
- Tuba**: Tuba, starting with *ff* and *f* dynamics.
- Timp.**: Timpani, starting with *f* and *mp* dynamics.
- Perc. 1/2/3**: Percussion parts, starting with *ff* and *pp* dynamics.
- Pno.**: Piano, starting with *ff*, *mp*, and *mf* dynamics.
- Vln. I/II**: Violin parts, starting with *ff* and *f* dynamics, including *unis. pizz.* and *div. arco* markings.
- Vla.**: Viola, starting with *ff* and *f* dynamics, including *div.* and *unis.* markings.
- Vc.**: Violoncello, starting with *ff* and *f* dynamics.
- D.B.**: Double Bass, starting with *ff* and *f* dynamics.

The score features complex rhythmic patterns, including time signature changes from 4/4 to 3/4 and 2/4. Dynamic markings range from *pp* (pianissimo) to *ff* (fortissimo). Performance instructions like *plunger mute* and *gradually open* are used for the trumpet parts.

Supernova

This page of the musical score for 'Supernova' includes parts for Piccolo, Flutes 1 and 2, Oboes 1, 2, and 3, Clarinets in A and Bb, Bassoons 1 and 2, Contrabassoon, French Horns 1, 2, 3, and 4, Trumpets in C 1, 2, and 3, Trombones 1, 2, and 3, Tuba, Timpani, Percussion 1, 2, and 3, Piano, Violins I and II, Viola, Violoncello, and Double Bass. The score features complex rhythmic patterns, including a change from 2/4 to 4/4 time. Dynamic markings range from *pp* to *ff*. Performance instructions include 'gradually close', 'senza sord.', 'plunger mute', 'deadstroke', and 'unis. pizz.'. A circled number 12 indicates a rehearsal mark. The page number 9 is located at the bottom left.

22

Picc.

Fl. 1
2

1
Ob. 2
3

1
A.CI. 2
3

1
2
Bsn. 2
3

C. Bn.

1
2
F.Hn. 3
4

1
2
3
C.Tpt. 4

1
2
Tbn. 2

B. Tbn.

1
2
Tuba

22

Timp.

Perc. 1
Xylophone *hard mallets*

Perc. 2
Marimba *hard mallets*

Perc. 3

Pno.

22

Vln. I

Vln. II

Vla.

Vc.

D.B.

22

This page of the musical score for 'Supernova' includes parts for Piccolo, Flutes 1 and 2, Oboes 1 and 2, Clarinets in A and Bb, Bassoons 1 and 2, Contrabassoon, French Horns 1, 2, and 3, Trumpets in C 1, 2, and 3, Trombones 1 and 2, Baritone Trombone, Tuba, Timpani, Percussion 1, 2, and 3, Piano, Violins I and II, Viola, Violoncello, and Double Bass. The score is divided into four measures. The first measure is in 4/4 time with a *ff* dynamic. The second measure changes to 3/4 time with dynamics of *f*, *fp*, and *p*. The third measure is in 3/8 time with a *f* dynamic. The fourth measure returns to 4/4 time with dynamics of *mp* and *f*. The Percussion 3 part features large time signature changes (4/4, 3/4, 3/8, 4/4) corresponding to the other parts. The Piano part has a *ff* dynamic. The Violins and Viola parts have dynamics of *f* and *fp*. The Violoncello and Double Bass parts have dynamics of *ff*, *f*, and *mp*. The French Horns 1 and 2 parts have dynamics of *mf* and *mp*. The Trombone 1 part has a *pp* dynamic and a 'plunger mute' instruction. The Tuba part has a *f* dynamic. The Piccolo part has a *ff* dynamic. The Flutes 1 and 2 parts have dynamics of *f* and *fp*. The Oboes 1 and 2 parts have dynamics of *p* and *f*. The Clarinets in A and Bb parts have dynamics of *ff*, *f*, and *mp*. The Bassoons 1 and 2 parts have dynamics of *ff*, *mf*, and *f*. The Contrabassoon part has a *ff* dynamic. The Timpani part has a *f* dynamic. The Percussion 1 part has dynamics of *ff* and *f*. The Percussion 2 part has dynamics of *ff* and *mp*. The Percussion 3 part has dynamics of *f* and *mf*. The Piano part has a *ff* dynamic. The Violins I and II parts have dynamics of *f* and *fp*. The Viola part has dynamics of *f* and *fp*. The Violoncello part has dynamics of *ff* and *f*. The Double Bass part has dynamics of *ff* and *f*.

Picc.
 Fl. 1 2
 1
 Ob. 2 3
 A Cl. 1 2 3
 Bsn. 1 2
 C. Bn.
 F Hn. 1 2 3 4
 C Tpt. 1 2 3
 Tbn. 1 2
 B. Tbn.
 Tuba
 Timp.
 Perc. 1
 Perc. 2
 Perc. 3
 Pno.
 Vln. I
 Vln. II
 Vla.
 Vc.
 D.B.

Musical score for "Supernova" featuring various instruments including Piccolo, Flutes, Oboes, Clarinets, Bassoons, Horns, Trumpets, Trombones, Tuba, Timpani, Percussion, Piano, Violins, Viola, and Double Bass. The score includes dynamic markings, articulation, and time signature changes.

35

Picc.

Fl. 1
2

Ob. 1
2
3

A Cl. 1
2
3

Bsn. 1
2

C. Bn.

35

1. stopped

F Hn. 1
2

3
4

C Tpt. 1
2
3

Tbn. 1
2

B. Tbn.

Tuba

35

Tempo

Perc. 1

Perc. 2

Perc. 3

Pno.

35

Vln. I

Vln. II

Vla.

Vc.

D.B.

35

This page of the musical score for 'Supernova' includes parts for Piccolo, Flutes 1 and 2, Oboes 1 and 2, Clarinets 1 and 2, Bassoons 1 and 2, Contrabassoon, French Horns 1, 2, 3, and 4, Trumpets in C 1, 2, and 3, Trombones 1, 2, and 3, Tuba, Timpani, Percussion 1, 2, and 3, Piano, Violins I and II, Viola, Violoncello, and Double Bass. The score is divided into four measures. The first measure is in 4/4 time, the second in 3/4, and the third and fourth in 4/4. Dynamic markings include *pp*, *p*, *mp*, and *ppp*. Performance instructions such as 'plunger mute' are present for the trumpets. The page number '62' is located at the bottom left.

70

Picc. *ff*

Fl. 1 2 *ff*

Ob. 1 2 3 *ff*

A Cl. 1 2 3 *ff*

Bsn. 1 2 *ff*

C. Bn. *ff*

F Hn. 1 2 3 4 *ff*

C Tpt. 1 2 3 *ff* *senza sord.*

Tbn. 1 2 *ff*

B. Tbn. *ff*

Tuba *ff*

Timp. *ff*

Perc. 1 *ff* *Tam-tam hard beater* *L.v.*

Perc. 2 *ff* *L.v.*

Perc. 3 *ff* *Glockenspiel hard mallets*

Pno. *ff*

Vln. I *ff*

Vln. II *ff*

Vla. *ff* *div.*

Vc. *ff* *div.*

D.B. *ff*

70

This page of the musical score for 'Supernova' includes the following parts and markings:

- Picc.**: Piccolo part with dynamics *ffp*, *ff*, *mf*, and *p*.
- Fl.**: Flute parts with dynamics *ffp*, *ff*, *mf*, and *p*.
- Ob.**: Oboe parts with dynamics *ffp*, *ff*, *mf*, and *mp*.
- ACL.**: Alto Clarinet parts with dynamics *ffp*, *ff*, *mf*, and *mp*.
- Bsn.**: Bassoon parts with dynamics *ff*, *mf*, *ff*, *f*, and *mp*.
- C. Bn.**: Contrabassoon part with dynamics *ff*, *mf*, *ff*, *f*, and *mp*.
- F Hn.**: Flute Horn parts with dynamics *mf*, *ff*, *mf*, *f*, *mf*, and *mp*.
- C Tpt.**: Cornet parts with dynamics *ffp*, *ff*, *mf*, and *p*. Includes the instruction *plunger mute*.
- Tbn.**: Trombone parts with dynamics *ff*, *mf*, *ff*, *f*, and *mp*.
- B. Tbn.**: Baritone Trombone part with dynamics *ff*, *mf*, *ff*, *f*, and *mp*.
- Tuba**: Tuba part with dynamics *ff*, *mf*, *ff*, *f*, and *mp*.
- Timp.**: Timpani part with dynamics *mf* and *p*.
- Perc. 1**: Percussion 1 part with dynamics *fp*, *f*, *mp*, and *p*.
- Perc. 2**: Percussion 2 part with dynamics *p*, *f*, and *pp*.
- Perc. 3**: Percussion 3 part with dynamics *mf* and *pp*.
- Pno.**: Piano part with dynamics *mf*.
- Vln. I**: Violin I part with dynamics *ffp*, *ff*, *mf*, and *mp*. Includes the instruction *div.*
- Vln. II**: Violin II part with dynamics *ffp*, *ff*, *mf*, and *mp*. Includes the instruction *unis.*
- Vla.**: Viola part with dynamics *ffp*, *ff*, *mf*, and *p*.
- Vc.**: Violoncello part with dynamics *ff*, *mf*, *ff*, *f*, and *mp*.
- D.B.**: Double Bass part with dynamics *ff*, *mf*, *ff*, *f*, and *mp*.

